

# RODOLPHEANDO

R. KREUTZER

ARRANGED BY: ROGERIO BOTTER MAIO

CMA7 C/B AMIN7 AMIN/G C/Bb AMIN7 AMIN/G

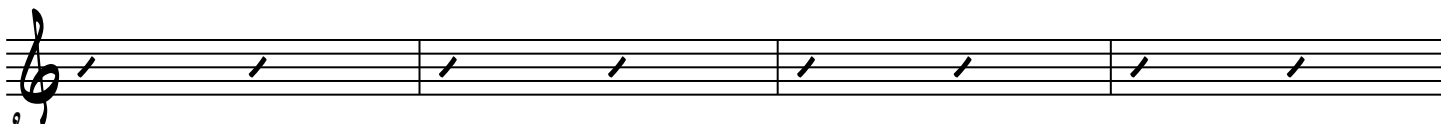


FMA7 D/F# G7sus4 Ab7 AMIN7 DMIN7 C/E F7



5

BbMA7 EbMA7 BbMA7 G7 AMIN7 B7(b9) EMIN7 AMIN7/G



9

F#o G7sus4 E7(#5)/G# AMIN7 F/A DMIN7 G7



13

C A7(#5) / C# DMIN7 /C G7/B G7sus4 G7 C7sus4 D/C



17

FMA7 F#o7 G7sus4 G7 Abo7 AMIN7 DMIN7 EMIN7 E7(#9)



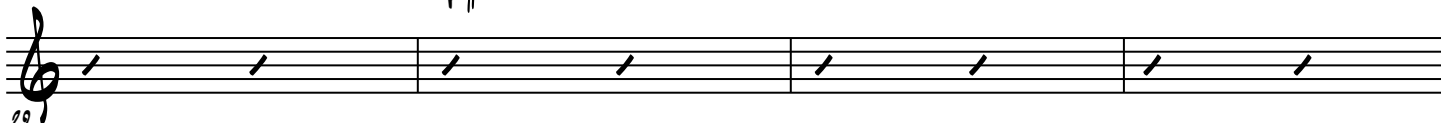
21

FMA7 BbMA7 Bm7(b5) E7(b9) FMA7 DMIN7 F#m7(b5) B7(b9)




25

CMA7 FMA7 D7 / F# G7sus4 G7 Abo7 AbMA7 AMIN7 Bm7(b5)




29


2  $E7(\#5)$   $FMA7/E$   $D7sus4$   $D$   $G7$   $G7sus4$   $E7$   
 $G\#$   $C$   $B$   $G\#$



33  $CMa7$   $FMA7$   $D7$   $E7$   $FMA7$   $A7(\#5)$   $BbMA7$   $Dmin7$   
 $E$   $F\#$   $G\#$   $C$



37  $G$   $G7$   $Eo7$   $FMA7$   $BbMA7$   $Amin7$   $G$   
 $D$



41  $Dmin7$   $C$   $FMA7$   $G7$   $Amin7$   $Emin7$   $FMA7$   $G7$   $C$   
 $E$



50  $C$   $Abo7$   $C$   $Abo7$   $Ab$   $C$   
 $C$



52  $C$   $Ab$   $C$   $Ab$   $C$

